

February 2006

Description

The T2X-DWB Wall-Mount Room Air Temperature Monitoring System delivers the long-term stability of Moore Industries' T2X transmitter while being enclosed in a durable wall-mounted box. It can be used in a wide range of indoor temperature sensing applications.

The PC-programmable T2X-DWB has an internal 1000 ohm RTD for room temperature sensing. It provides a proportional 4-20mA output that is linear with temperature, and ready for direct interface with a monitoring and/or control system.

Figure 1. Installation Dimensions

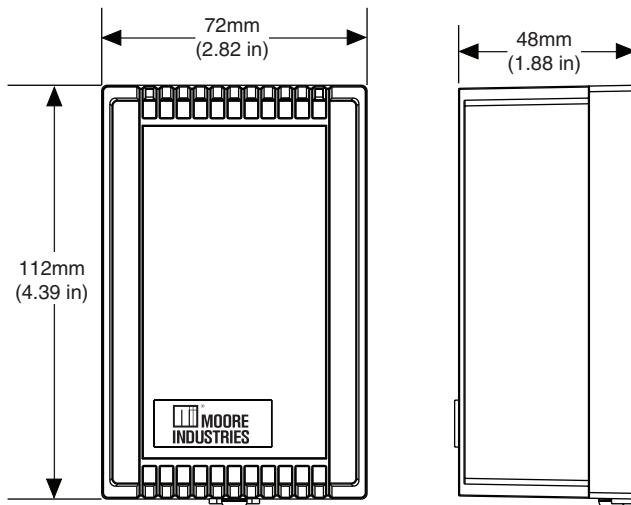
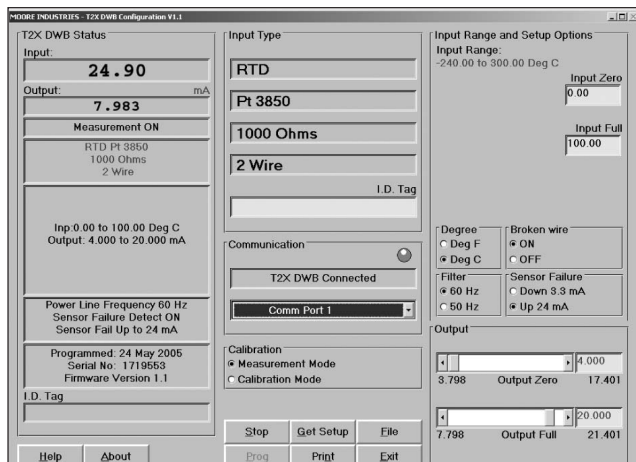


Figure 2. In just minutes, you can set up the T2X-DWB using our single window Intelligent PC Configuration Software.



The T2X-DWB mounts directly to a wall for quick and easy installation.

Features

- Mounts easily to a wall for simple installation.
- Sensor placement and vented housing design allow for maximum air flow.
- Sets up in a minute or less with single window Intelligent PC Configuration Software.
- Provides a proportional 4-20mA output that is ready for direct interface with a monitoring/control system.
- Independent input and output scaling capabilities.
- Full 3-year warranty.

Certifications

CE CE Conformant – EMC Directive 89/336/EEC
EN 61326

T2X-DWB

Wall-Mount Room Air
Temperature Monitoring System

Specifications

<p>Performance</p> <p>Input Accuracy: Platinum RTD, ±0.5°C (±0.9°F)</p> <p>Output Accuracy: Input Accuracy + 0.1% of output span</p> <p>NOTE: Overall accuracy is determined by combining input and output accuracy. It includes the combined effects of linearity, hysteresis, repeatability and adjustment resolution. It does not include ambient temperature effect.</p> <p>Calibration: Set at factory; sensor cannot be removed</p> <p>Stability (maximum span): 1 year = ±0.12% 3 years = ±0.21% 5 years = ±0.27%</p> <p>Measurement Cycle: Output updates at least 8 times per second</p> <p>Output Response Time: 256msec typical, 360msec</p>	<p>Performance (continued)</p> <p>maximum, for the output to change from 10% to 90% for an input step change of 0% to 100%</p> <p>Over-Voltage Protection: Output, 48Vdc, maximum; Reverse Polarity, 48Vdc, maximum</p> <p>Digital Input Filter: User-selectable, 50/60Hz</p> <p>Power Requirement: 8-42Vdc</p> <p>Power Supply and Load Effects: Negligible within specified power limits</p> <p>Load Capability: 700 ohms@24V</p> <p>Supply Voltage - 8V $\frac{\quad}{0.024A} = \text{Ohms}$</p> <p>Burnout Protection: User-programmable, Upscale to 23.6mA; Downscale to 3.3mA</p> <p>RTD Lead Wire</p> <p>RTD Excitation: 250 microamps, ±10%</p>	<p>Ambient Conditions</p> <p>Operating Range: -40°C to +85°C (-40°F to +185°F)</p> <p>Storage Range: -55°C to +105°C (-67°F to +221°F)</p> <p>Relative Humidity: 0-95%, non-condensing</p> <p>Ambient Temperature Effect: ±0.015% of span/°C change</p> <p>RFI/EMI Immunity: 10V/m@80-1000MHz, 1kHz AM when tested according to IEC 61326 with an error of 0.5% of span or less</p> <p>Noise Rejection: Common mode: 100dB@ 50/60Hz; Normal Mode: 70dB typical at 200mVp-p@50/60Hz</p> <p>Set Up All settings are made using Moore Industries' T2X-DWB PC Configuration Software, and then stored in nonvolatile memory</p> <p>Weight 113 g (4 oz)</p>
---	---	---

Specifications and information subject to change without notice.

Table 1. Input Type and Ranges

Type	α	Ohms	Conformance Range	Maximum Range*	Minimum Span
Platinum	0.003850	1000	-200 to 300°C -328 to 572°F	-240 to 300°C -400 to 572°F	10°C 18°F

*Transmitter will measure ranges outside of the Conformance Range with some degradation to accuracy ratings.
Consult the factory for details.

Ordering Information

Unit	Input	Output	Power	Options	Housing
T2X Wall-Mount Room Air Temperature Monitoring System	PT10 Pt 3850 RTD, fixed 1000 ohm	Current Any range between 4-20mA	8-42DC ±10%	-VTD Standard Factory Calibration	DWB Decorative Wall Box

To order, specify: Unit / Input / Output / Power [Housing]
Model Number Example: T2X / PT10 / 4-20MA / 8-42DC [DWB]

Accessories

Each T2X-DWB order comes with one copy of our
Configuration Software (Windows® compatible) on CD
and one non-isolated configuration cable. To order
additional software or cables, refer to the chart.

Part Number	Part
750-75E05-01	T2X-DWB PC Configuration Software Program
803-039-26	Isolated Configuration Cable
803-040-26	Non-Isolated Configuration Cable



WORLDWIDE • www.miinet.com

United States • info@miinet.com
Tel: (818) 894-7111 • FAX: (818) 891-2816

Australia • sales@mooreind.com.au
Tel: (02) 8536-7200 • FAX: (02) 9525-7296

Belgium • info@mooreind.be
Tel: 03/448.10.18 • FAX: 03/440.17.97

The Netherlands • sales@mooreind.nl
Tel: (0)344-617971 • FAX: (0)344-615920

China • sales@mooreind.sh.cn
Tel: 86-21-62491499 • FAX: 86-21-62490635

United Kingdom • sales@mooreind.com
Tel: 01293 514488 • FAX: 01293 536852